

JOHN HENRY NEWMAN ACADEMY SPORTS NEWS

Year 3/4 Mixed Football Friendly: JH Newman 1 : St. John Fisher 0.

Year 5/6 Girls' Oxford School's FA League:

JH Newman 6 :

Pegasus Primary 1.

After winning all 3 of their league games, the JHN Girls' Year 5/6 team have

qualified for the Oxford School's FA League Finals, to be

played in March at The Oxford Academy. Congratulations, girls! They are

pictured in their brand new yellow & black football kit from

Jon Kogel at J.K. Garden Maintenance, Abingdon. The Year 5/6 Boys' have

received a brand new blue & white football kit from Dominic Lowe & Lorraine Surman at Wheatley Car Centre, Wheatley. The kits are amazing: *thank you from all at JHN.*

Call for sporting former students

Please help us find ex-students of Speedwell, Lawn Upton or John Henry Newman that have gone on to achieve great things in any sport. If they have represented their country, played professionally, been to the Olympics, or done anything special that you think is of interest, please put them in contact with John Henry Newman. We would love to invite them into school to talk to and inspire the children ahead of the Paris Olympics, and in preparation for our Sports Week 2024. The email address is office.2000@jhnacademy.co.uk. *Mr Surman*

NEWS FROM THE LISTINGS PAGES (find them on pp 8-15)

✓ **Sing & Sign with your baby**, at the Village Hall is offering an extra session on Mondays at 12.30pm. Contact oxford@singandsign.co.uk or 07795 005 832.

✓ **Oxford Preservation Trust: Green space volunteering** at Heyford Meadow, Heyford Hill Lane is now on the 3rd Friday of every month, 9:30am-12:30pm. All are welcome, tools are provided. Just turn up or phone 01865 242 918.

✓ There is now a new section giving info about how to find other local newsletters:-

- **Blackbird Leys:** Sign up for the Community Group Newsletter at www.facebook.com/groups/656236718050193
- **Rose Hill:** find the latest Newsletter at: rosehillnewsonline.com/editions or follow their Facebook page: www.facebook.com/RoseHillNews. To get in touch, email Aimee Winkfield at aimee-rosehillnews@hotmail.com
- **Sandford on Thames:** find The Sandford Link at <https://sandford-on-thames-pc.gov.uk/the-sandford-link/>



photos © JHN & SJF: permissions given

NEWS FROM ST JOHN FISHER SCHOOL

The end of the Christmas term was a time of celebration at St John Fisher with the highlight being our Nativity play. The children were lucky enough to have a real donkey appear. It was ridden into the school hall by Mary, much to the joy and amusement of children and families. This led to our children being interviewed in the Oxford Mail, & on BBC Radio Oxford. Our Championship-winning football team has gone from



strength to strength, winning an Oxford-wide competition. They will now go on to represent Oxford United in a Regional Competition, with a chance to play at Wembley Stadium up for grabs. The next big event at St John Fisher will be the grand opening, after

February half term, of our own Pop-Up Swimming Pool - the first in Oxford. It will allow us to provide swimming lessons on site!

There are a few 'In-Year' places still available at school. To find out more please come by for a visit, or attend one of our Open Days. *Mr Higgins, Head*

DATES FOR YOUR DIARY

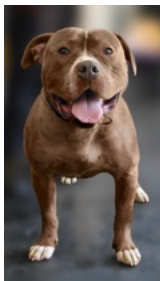
- **Weds February 21: Littlemore Local History Society (LLHS):** 7pm at the Community Centre. *Talk:* The Medieval nunnery of Goring Priory: history & comparison with Littlemore: Katie Hambrook.
- **Weds March 20: Littlemore Local History Society (as above):** *Talk:* Living the Lexicon, James Murray & the Oxford English Dictionary: Simon Wenham.
- **Sat 2 March 2-4pm: Littlemore Spring Clean:** starting at the Community Centre, finishing with Tea & Cake at the Village Hall. Just turn up or book in with Anna Railton: anna.railton@littlemoreparishcouncil.gov.uk.
- **Sat March 16: SKA Reggae & Soul Night with The Inflatables:** 8 'til late: at the Royal British Legion Club, Lakefield Road. Tickets £10: only from the Club: contact Katie Tutty 01865 778 869 or Lorraine Whipp 07879 053 246.
- **Sat 15 June: The Oxfordshire Play Association Play & Activity Day** at the Oxford Road Recreation Ground from 11am until 3pm. Both Entrance & Activities will be free.
- **Sun 25 August : Littlemore Rugby Club Fun Day:** 12-5pm at the Rugby Club: find it at Northfield Close entrance to The Oxford Academy Campus.

NEW LAWS FOR XL BULLY DOGS

From 31 Dec 2023 it is against the law to:

- breed from, or abandon, or sell, or give away an XL Bully dog, or let it stray
- have an XL Bully in public without it wearing a lead and a muzzle

From 1 February 2024 it will be a criminal offence to own an XL Bully dog in England & Wales unless your dog has a Certificate of Exemption.



Find out more from: <https://www.gov.uk/guidance/prepare-for-the-ban-on-xl-bully-dogs#>

To keep an XL Bully dog it must be:

- microchipped and neutered
- kept on a lead and muzzled at all times when in public
- kept in a secure place so it cannot escape.

Owners must

- be over 16 years old
- have third party public liability insurance
- show the Certificate of Exemption when asked by a police officer or a council dog warden, at the time, or within 5 days.

Cross breeds: The ban may apply to dogs which look more like an XL Bully than any other type of dog.

To check your dog see: www.gov.uk/government/publications/official-definition-of-an-xl-bully-dog .

Report your concerns about dangerous dogs to Thames Valley Police on their non-emergency phone number, 101.

RECYCLING NEWS:

Vapes: should not be disposed of in litter bins, general waste, or mixed recycling as they can contaminate other recycling, and cause fires. However **you can now Recycle Your Vapes:**

- in a clear bag, on top of any bin lid
- in up to 60 new recycling collection points at small retailers, pubs & cafes across Oxford, Banbury, Bicester & Kidlington
- in new public recycling bins at each of the Household Waste Recycling Centres, including Redbridge.

Reminder: Small electrical & battery recycling

Place them in separate clear bags on top of any bin lid on your collection day. If you live in a flat with shared bins, find a local recycling point at recycleyourelectricals.org.uk, or go to Redbridge Recycling Centre.

To sign up for waste collection updates, & a weekly reminder of your collection date, go to <https://public.govdelivery.com/accounts/UKOCC/subscriber/new?> .

DIY waste: limited amounts can now be recycled free: but you must book online in advance. See: <https://news.oxfordshire.gov.uk/book-online-before-disposing-of-limited-quantities-of-diy-waste-for-free> .

PARK IMPROVEMENTS WORKING GROUP

We met on 11 January to discuss possible short- and long-term improvements to our Littlemore parks, including Little Park, and Herschel Crescent & Oxford Road Recreation Grounds. Current ideas, based on results from recent surveys of local residents include lighting the footpath across Oxford Road Rec, a lit weather-proof path around the field, more seating, an overhaul of the Multi Use Games Area and the children's play area, providing outdoor exercise kit with a table tennis table, and perhaps inviting a mobile coffee outlet to the Rec! For Little Park, a lit weatherproof path, additional seating, bins and more planting were considered priorities. Plans for Herschel Crescent Rec are moving forward too and will be reported in full in later issues. Meanwhile we are pleased to report that damaged swing seats in Ox Rd Rec have been replaced. If you would like to contribute ideas please email oxfordroadparkpsg@gmail.com .

Ruth Corrigan

NEWMAN PLACE: ARMSTRONG ROAD

Housing association Peabody, with partners Oxford City Council and The Hill Group, has finished building 273 fully affordable homes at Newman Place on Armstrong Road, Littlemore. This is former NHS land, which contains a burial site, and which used to house the hospital farm and glasshouses. To honour this, priority has been given to NHS workers seeking a shared ownership home, thirty of whom have now moved in.

Of the 273 homes, 162 are available for shared ownership, and 111 have been built for social rent. There are apartments and houses for first-time buyers, 3-, 4 and 5-bedroom family homes, and wheelchair-accessible homes.

Three of the buildings are fitted with solar panels, and there will be electrical vehicle charging points across the site. Two habitats made from all-natural materials are being created to enhance biodiversity and protect slow worm populations. New cycleways and footpaths connect Newman Place with the neighbouring Littlemore Brook, and The Oxford Science Park.

ELLISON INSTITUTE OF TECHNOLOGY: NEWS

A team of approximately 130 people are working hard onsite, on the early stages of the Ellison Institute of Technology (EIT) development. EIT will occupy adjacent sites on both sides of Littlemore Brook, at Littlemore House in Armstrong Road, and in the Science Park (see issue 454 for maps). Littlemore House itself will remain, and its history will be part of the new scheme, but inside, strip-out of the existing spaces has started and will give a blank canvas to build upon. Externally, the piling working platform is nearing completion and 4 piling rigs and 4 crawler cranes have arrived on site. These 4 'teams' of machinery are installing temporary test piles & tower crane foundation piles as part of the early works planning approval.



Meanwhile, the secant pile guide wall (white, bottom left) is being constructed so that the main piling works can start, and be placed accurately as soon as the main plans are approved. You may have noticed the name change from Ellison Institute of Transformative Medicine to Ellison Institute of Technology (EIT). This reflects a broadened mission: the Institute will now focus on 4 key areas of scientific & technological innovation: Medical science & healthcare; Food security & sustainable agriculture; Clean energy & climate change; Government policy & economics.

Amanda Thompson, Laing O'Rourke



How EIT may look. Find more about the proposed development at www.fosterandpartners.com/news/designs-for-ellison-institute-of-technology-campus-revealed .

NOISE POLLUTION: the health impact of Ring Road noise

The UK Health Security Agency has conducted a new study to understand better how health & wellbeing are affected by noise. The research shows that the noise can lead to an increase in an individual's risk of developing serious health problems such as heart disease, stroke, or diabetes. Health effects are more likely to be detected if people are exposed to noise levels exceeding 50 dB, which is around the level of noise on a quiet street. (Source: <https://ukhsa.blog.gov.uk/2023/06/29/noise-pollution-mapping-the-health-impacts-of-transportation-noise-in-england/>)

Impact on a local planning application: Northfield House

The City Council has approved a new housing estate at the junction of Sandy Lane West with the ring road. Planning conditions (25 & 26) required assessment of road traffic noise



affecting the proposed apartment blocks. It was done last June/July, and is now published. It shows that the northern boundary of the site, which overlooks the ring road is subject to 73-75dB noise in the day time, and 61-71dB at night (measured at 3.5metres above ground). The southern boundary of the site, overlooking Sandy Lane West suffers from 61-63dB in the day time and 56-59 at night (measured 2metres above ground). So, to meet BS 8233:2014 (the Standard for Guidance on sound insulation), and keep noise inside the new homes below 35dB, acoustic glazing will be needed, and a 3.5-4 metre-high barrier along the road. If traffic continues as it is, it will not be healthy for residents to keep their windows open.

You can find the report at https://public.oxford.gov.uk/online-applications/files/557A5F50175C5B45D71442683BE3A149/pdf/21_03328_CND2 then look for 25/26 Noise Assessment.

Northfield House: construction & traffic management plans

Find detail of the construction & traffic management plans at: public.oxford.gov.uk/online-applications/applicationDetails.do?activeTab=documents&keyVal=S0X2DPMFGRG00.

Construction parking will not be permitted in Sandy Lane West or in Bampton Close. Scheduled deliveries will be minimised in the rush hours between 8am and 9:30am, and from 3:30pm to 5pm. If you think the conditions are breached, report to Cllrs Tiago Corais and/or Sandy Douglas (cllrtcorais@oxford.gov.uk Cllrsdouglas@oxford.gov.uk).

DOMINION OIL SITE, RAILWAY LANE

- Folk interested in what remains of the archaeology of the Dominion Oil site in Railway Lane can find a plan for excavations at <https://public.oxford.gov.uk/online-applications/applicationDetails.do?keyVal=S2DE18MFI9T00&activeTab=summary> then go to 'documents', and 'written scheme of investigation'
- There is a new tree protection plan, referring to a handful of trees that remain after the site was stripped of vegetation in winter 2020/2021, well before Archeology and Biodiversity reports were required by Planning.
- The Biodiversity report says: 'the principal potentially damaging activity is site clearance. This has the potential to kill or injure wildlife due to the use of heavy machinery. Once the site has been cleared, further activity on site is unlikely to pose a significant risk'. It goes on to say that the population of slow worms on the site was relocated to an off-site receptor between 3 September 2021 and 9 September 2023. It was probably too late to save all of them. There is no mention of badgers remaining on the site.

COWLEY BRANCH LINE NEWS

- Oxford City Council has approved funding worth £498,799 for SLC Rail to deliver design studies for new stations near Littlemore and Blackbird Leys as part its plan to reinstate the Cowley Branch Line. The line was closed to passenger services in 1963, and is now used only for freight to and from the BMW Mini Plant.

Current proposals would see trains travel from Oxford Parkway and Oxford Station, through Oxford South station next to the Oxford Science Park, and on to the Oxford East station near Oxford Business Park & Oxford Retail Park. The proposal is to provide a half-hourly direct service from and to London Marylebone via Oxford, and Oxford Parkway, possibly utilising the existing Chiltern Railways service. To prevent Littlemore becoming a car park for Oxford South station, it will probably become a Controlled Parking Zone.

Both proposed stations will be located to serve two very substantial new developments proposed for greenbelt land south of Grenoble Road. These proposed developments are

- at the Northfields site east of Greater Leys (2000 new homes, primary school, commercial centre: see <https://www.lqestates.co.uk/development/south-oxford-oxfordshire>).
- south of Littlemore adjacent to the Science Park (see aerial shot below). Proposed are expansion of the Science Park, 3000 new homes, primary & secondary schools, a district centre: (see: <https://www.oxfordsciencevillage.com>)



- The council has further committed to spend £133,484 for the delivery of feasibility & design work for a cycle & footbridge near the proposed Oxford South station in Littlemore.
- For more, and a timeline (indicative programme) see: <https://mycouncil.oxford.gov.uk/mgAi.aspx?ID=35228>

NEIGHBOURHOOD PLAN: UPDATE

Work on the Plan is progressing well. We are hoping to have a final version ready for a referendum in May 2025. A first draft has almost been finalised and soon will be sent to Oxford City Council for them to comment on, and decide whether two possible statutory assessments have to be carried out, (though we are expecting not). We hope that on 13 February the draft will be approved by the Parish Council and that it will be available for public consultation from early March to mid-April. We hope to publish details of the consultation in the next LITTLEMORE LOCAL, on the Parish Council website, and in other ways: we hope to offer two public meetings, and a chance for those who live or work in Littlemore, members of public bodies, and developers to comment and make suggestions on-line or in writing.

If you would like to know more about the consultation, or the Neighbourhood Plan more generally, please contact me on tony@edperspectives.org.uk or Jan Pullen on jan.pullen@littlemoreparishcouncil.gov.uk

Tony Eaude

THE WATER BOARDERS

In Littlemore did water boards
a white-domed sewage farm decree
where ancient sewers ever ran
through caverns measureless to man
down to a broiling sea.

The water boarders could not face
the rising quantities of waste
produced by giant new estates.
The water boarders cashed their chips
and sailed across the sea in ships
abandoning their ancient sewers
to a group of wealthy brewers.

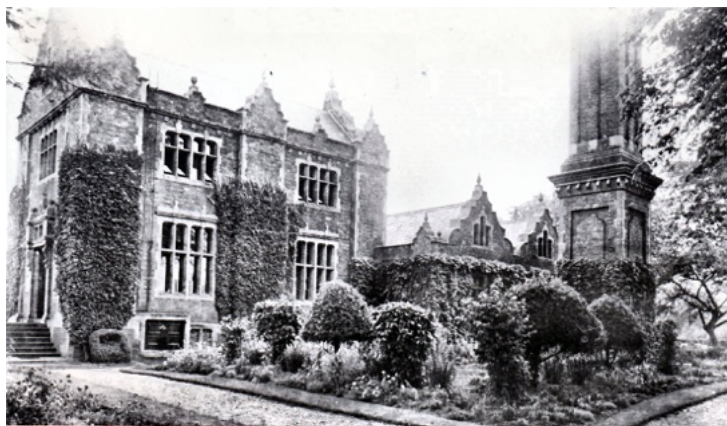


John Wilde
illustration by Andrew Walton

Some poetic licence applies to John's poem...
see below for some of the public facts....Ed

QUESTION!

What was this building and where did it stand?



Clue: The structure to the right of the image is a tall chimney.

ANSWER:

It's Littlemore Pumping Station, which stood from about 1875-1956 on what is now Heyford Hill Lane. Before the ring road was built, the lane linked Littlemore and Iffley. Littlemore has provided a Public Health service to the city for more than a century by providing space for this Pumping Station and its replacements.

Until the late 18th century water drainage was simply by open gutters which were usually in the middle of the street. Sewage was chiefly collected in domestic cesspits and carted away. There were frequent complaints that drains and watercourses were nothing more than open sewers.

The outbreaks of cholera in 1832, 1849, and 1854 drew attention to the still unsatisfactory state of the city's drainage. An inquiry in 1851 revealed that although most streets were by served by underground sewers, the sewers discharged straight into rivers: several of them lay above the city waterworks, from which water was extracted for industries such as brewing.

continued...

Although the Thames Conservancy ordered that discharge of sewage into the river must cease in 1868, the first work on a new sewerage system began only in 1873. Littlemore Pumping Station was completed in 1880. At that stage about 33 miles of sewers and surface drains were laid, serving most of the built-up area. About $\frac{3}{4}$ of the houses in the city were connected to the system.

The pumping station built in Littlemore in 1880 raised the sewage to a 370-acre sewage farm between Littlemore and Sandford. The station was located in a 5½ acre riverside meadow called Nye Mead. Its being at a lower level than Oxford enabled gravity drainage to the pumping station, where engines raised the sewage to the farm some 90 feet higher. This accounts for the chimney in the picture.

The drainage system was extended to New Botley in 1884. In 1895 the Littlemore sewage farm was enlarged by 627 acres, and this allowed further extensions: to Summertown in 1890, and to Cowley St. John in 1897.

In about 1920 Headington, Cowley, Iffley, New Marston and part of Wolvercote were connected to the system, and by 1939 there were about 120 miles of sewers.

However, things didn't go swimmingly, for by 1952 the city's sewerage system was described as '*probably the most backward in the country*' and there was considerable nuisance and pollution. So in 1957 the pumping station and sewage farm were replaced by a new pumping station and purification plant on part of the **OLD** site, and another pumping station was built at a **NEW** site Minchery Farm. (See map below.)



The complex now called Oxford Sewage Treatment Works and Littlemore Sewerage Pumping Station serves about 250,000 customers. Developments continue: for example, it will be expanded to accommodate the needs of the Science Park.

Sadly Thames Conservancy 1868 standards are not fulfilled, and discharge of sewage into the river continues. See: <https://www.thameswater.co.uk/about-us/performance/river-health/storm-discharge-data>

Find info about Thames Water structure, and about its investors, and who owns it at <https://www.thameswater.co.uk/about-us/governance/our-structure>

Sources:

- <https://www.british-history.ac.uk/vch/oxon/vol4/pp350-364#p18>
- <https://corporate.thameswater.co.uk/-/media/Site-Content/Thames-Water/Corporate/AboutUs/Investing-in-our-network/Sewerage-catchment-studies/2018-catchment-plans/Oxford-catchment-plan.pdf>
- <https://oxfordspconsultation.co.uk/developing-the-oxford-science-park/>

EXCITING NEW PROJECT AT GALLOWS BRIDGE FARM

Our local wildlife charity's experts work with more than 1,700 volunteers to look after over 80 nature reserves. One is Gallows Bridge Farm near Bicester. You don't need to be a member of BBOWT to visit it.

It's part of the Upper Ray Meadows complex which lies within the joint BBOWT and RSPB Ray Valley Restoration project area. Here water meadows are being restored, to provide homes for birds such as Curlew and Lapwing.

The curlew is one of our most bizarre and beautiful birds: it has a downward-curved beak, and it makes a famous 'cur-lee' cry. Sadly, because of changes in the way we farm and huge development of the countryside, over the past hundred years, the number of curlew has plummeted and they are now on the conservation red list.

At Gallows Bridge Farm, their numbers are limited by predators. Helped by a grant from the FCC Communities Foundation* the Trust will soon be able to create a bespoke habitat to allow the birds to breed in safety.

The BBOWT team will start by creating a new wetland: 30 new pools called scrapes which curlews can bathe and feed in. Overwintering wildfowl such as wigeon, teal, snipe and golden plover will also benefit from the wetland, and insects such as dragonflies.

Officers will then cut back or coppice huge amounts of hedgerow: this will create the more open habitat that curlews prefer because there are fewer places for birds of prey to perch and nest. This work will also benefit one of Britain's rarest butterflies – the brown hairstreak – which will lay its eggs on new shoots as the hedges grow back.

Elsewhere, new anti-predator fences will create enclosed nesting areas where foxes and badgers can't reach other vulnerable ground-nesting birds. These areas will be perfect for two threatened species - the lapwing, which has iridescent wings and a striking black crest on its head, and the redshank which has bright orange legs.

Finally, when nesting season comes around, the Trust is planning to use night-vision cameras, and work with volunteers from the Upper Thames Waders Group to see how the breeding birds are getting on.

Thanks to the grant from the FCC Communities Foundation, the site will also become more visitor-friendly with educational display boards.

*FCC Communities Foundation is a not-for-profit business that awards grants for community projects through the Landfill Communities Fund. It is owned by the Spanish construction and services group, Fomento de Construcciones y Contratas (FCC) and is one of the UK's leading waste management and energy recovery companies. For more information please visit www.fcccommunitiesfoundation.org.uk.



Above: top to bottom
Location of Upper Ray Meadows
Curlew: by Terry Whittaker, 2020 Vision
Lapwing: © RSPB

Berkshire, Buckinghamshire and Oxfordshire Wildlife Trust (BBOWT) is one of 46 Wildlife Trusts across the UK working to secure a better future for wildlife. You don't need to be a member to visit our reserves, but if you subscribe, you will be helping our work.

We rely on the generosity of individuals, charitable trusts and businesses.

Find out more at www.bbowl.org.uk or contact me, Pete Hughes, Communications Officer

BBOWT, 1 Armstrong Road, Littlemore, OX4 4XT M: 07845 014524

E: petehughes@bbowl.org.uk

THE FLOODPLAIN AT WORK

The dramatic aerial photo shows hundreds of acres of local farmland and countryside in flood. This may seem like a disaster, but the photo shows the Thames floodplain doing exactly what it is supposed to do.

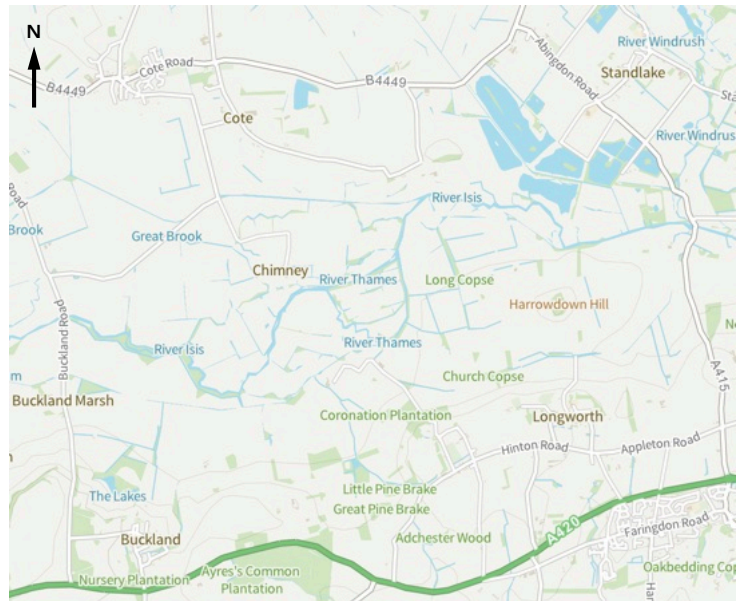
The picture, taken on Sunday, 7 January shows land around the hamlet of Chimney, near Standlake in West Oxfordshire inundated by recent floods. The flooded land includes BBOWT's 760-acre Chimney Meadows Nature Reserve.

For centuries the fields have flooded after heavy rain: this benefits a wide range of wildlife such as wetland birds, but it also helps people, because it slows and stores flood water that could otherwise cause more damage downstream, to villages, towns, and cities such as Oxford and London.

BBOWT, which manages the nature reserve and works with neighbouring landowners says the image shows the vital importance of floodplains for wildlife and people.

However, managing land on a floodplain is challenging, with climate change making it more so. Farmers are among the many people badly affected by flooding: they lose crops and have to move livestock away to dry land. The good news is that the Government is increasing payments to landowners to manage their land in ways that are beneficial to the environment: this helps maintain the viability of farm businesses.

One of the projects that BBOWT recently completed to improve the ecological connectivity of the upper Thames landscape was a £2 million wetland restoration project which included the construction of a new channel of the Thames through Chimney Meadows. The channel not only enables fish to swim around a weir, it also provides new habitat for wildlife and has restored the connectivity between river and floodplain. The Wildlife Trust, which manages dozens of nature reserves that have flooded as usual this winter, recently launched its biggest-ever appeal, the Nature Recovery Fund, aiming to raise £3 million in three years. This appeal, which will help it manage more land for people and wildlife to help tackle the nature and climate crisis, has already raised £262,000.



Find out more at www.bbowt.org.uk or contact me, Pete Hughes, Communications Officer
BBOWT, 1 Armstrong Road, Littlemore, OX4 4XT M: 07845 014524
E: petehughes@bbowt.org.uk

OXFORDSHIRE MIND: COURSES

Learn a range of skills to help you better manage life's challenges.

Oxfordshire Mind provides online and in person courses.

Find them listed at oxfordshiremind.org.uk/support-for-you/short-courses. If you are interested, book an Options Session to help them understand your mental health and wellbeing needs and find you the right kind of support. Phone 01865 247 788, email info@oxfordshiremind.org.uk, or text: 07451 277 973.

At the time of writing, they have vacancies in their spring courses on Assertiveness, and Managing Stress.

LITTLEMORE LOCAL

This news letter comes out every 2 months. Since 2015, there have been two versions: the long electronic version, which you can receive by email or find online, and the 4-page print issue which is delivered, free, to every home by volunteers.

If you would like to join the delivery team please contact:

Cllr Lynne Davies:

lynne.davies@littlemoreparishcouncil.gov.uk.

If you would like to contribute to the news sheet, or advertise a local business, or event, please contact

the editor: editor@littlemoreparishcouncil.gov.uk.

COURSES AVAILABLE AT THIS YEAR'S SUMMER SCHOOL AT THE OXFORD ACADEMY

Oxford Summer School of Arts & Crafts is taking place from Monday 5 August to Saturday 10 August 2024.

All workshops are very reasonably priced at £60 per day. Saturday is set aside for one-day classes.

Find details and book at <https://oxfordshireartandcraft.co.uk>

Organised by Anne Griffiths.

COURSES WITH SPACE AT THE TIME OF WRITING:

A Bird in a Hoop Appliqué
A Little Book of Fabrics
Abstract Sea - Print: Place: Stitch
An Introduction to French Ronde Calligraphy
An Introduction to Marbling
Artist's Books, Zines and Instant Books
Batik inspired by John Piper
Batik inspired by Plants and Seedpods
Batik on Tissue inspired by Trees
Boro Inspired Patchwork
Botanical Illustration
Building Up the Surface: Creating a Concertina Sketchbook
Building Up the Surface: From Sketchbook to Finished Piece
Chinese Brush Painting
Chinese Brush Painting: 'The Way of the Brush'
Collage and Stitch Like a Wild Beast
Drawing Daises with the Sewing Machine
Drawing for the Terrified
Embroidered Moroccan Mosaics
Expressionistic Landscapes in Acrylic
Expressive Surfaces Print, Paint and Collage
Felted Barn Owl
Floral Still Life in Oils or Acrylics
Flourished Lettering
Free Machine Embroidery for Beginners
From Truth to Abstraction in Mixed Media
Garden using Paint, Print, and Stitch
Get lost in Paper Marbling
Grid Journalling
Introduction to Patchwork with English Paper Piecing
Introduction to Straw Work
Journey into the Past: Pinhole Photography Workshop
Kawandi Quilting
Life Drawing Basics: Understanding the Human Form
Life Drawing: Experimental and Expressive
Making Pictures in Free Motion Machine Embroidery
Moon Jars
Nature Inspired Fabric Screen printing
One Step Away From Realism in Oils
Pastel Portraits
Photographic Screen Printing with Collage: Inspired by Nature
Print and Make a Pinny
Singalong a Showstopper
Sketchbook Development: Observations & Experimentation
Sustainable Camera-less Photography
Table Top Jewellery Making
Texture in Watercolour
There Are No Rules In Watercolour
Treasure Boxes with Collage and Stitch
Weaving on a Wheel



Pictured: Embroidered Moroccan Mosaics
Moon Jars
Sustainable Camera-less Photography

WHAT'S ON: GROUPS CLASSES ETC

Regular Events: February & March 2024

KEY: LOCATIONS IN and around LITTLEMORE

ACF	Army Cadet Force Building, OX4 6LD
ATC	Air Cadet Forces Centre, OX4 6LD
BDB	Blessed Dominic Barberi Hall, OX4 4JX
EKH	Edith Kempson Community Hall, OX4 4QB
FSS	Family Solutions Service: Ashhurst Way OX4 4UY
IBC	Indoor Bowls Club, OX4 6NA
JHN	John Henry Newman Academy, OX4 4LS
LCC	Littlemore Community Centre, OX4 4NL
RHCC	Rose Hill Community Centre, OX4 4HF
RBL	Royal British Legion Hall, OX4 4LZ
RMHC	Rose Hill Methodist Church: Rose Hill, OX4 4HS
SAC	St Andrew's Church: Sandford, OX4 4XZ
SHQ	Scout HQ, Fairlie Road, OX4 3SW
SVH	Sandford Village Hall, OX4 4YN
SM+SN	St Mary & St Nicholas Church, near OX4 4PB
TOA	The Oxford Academy, OX4 6JZ (except for Rugby Club which is via Northfield Close entrance: OX4 4NH)
VHL	The Village Hall, Littlemore, OX4 4PY

- **Acrobatics, Parkour, Aerial & Stunts:** Director: Oliver Ward 03302 233 995 or info@ukcfacademy.co.uk . Booking: <http://www.ukcfaction.co.uk>
 - **UKCF Academy®:** **TOA:** Parkour park, Tumble track & Stunts: trapezes, silks, hoops, handstand canes & more. Sundays: *10:30am-6pm: age 7-17 years *6-7pm: 18+
 - **UKCF Action Holiday Stunt Camps:** **TOA:** Book online today for Easter, Summer and Christmas camps in Stunts, Acrobatics, Aerial, Trampoline & Parkour.
- **Advice Centre:** serving Rose Hill, Donnington, & Littlemore. **NB:** Drop-in or Book Sessions are offered at **SM+SN:** Fortnightly on Thursdays 10-11.30am. For dates or to pre-book call 01865 438 634.
- **Aerial Arts Academy:** **TOA:** Aerials & Pole Dance. Fun weekday & weekend dance & fitness classes for all abilities. Use code OAA1STFREE for your first class free when you book online at aerialartsacademy.co.uk . Contact: Nicola Ghalmi 07909 974 256, info@aerialartsacademy.co.uk
- **Afternoon Tea** at **VHL:** Tea, coffee & delicious home-made cakes, and an opportunity to meet some of your Parish Councillors: first Saturday: 2.30-4.30pm (except August). Contact Claire Drinkwater 01865 718 580. See fliers p 13.
- **Age UK Oxfordshire:** for our support call 0345 450 1276, visit www.ageuk.org.uk/oxfordshire or email contactus@ageukoxfordshire.org.uk
 - **Drop in and meet our local Age UK Ox Rep:** Valerie Hunt at **SM+SN** Coffee Morning 10.30-12noon last Monday of month
 - **Strength & Balance Classes:** **LCC:** Tuesdays 10-11am: with Sarah Wheatley: first session free (a second class from 1.45 to 2.45pm will be offered soon): please book through active@Ageukoxfordshire.org.uk or 01235 849 403.

- **Stay Strong & Steady: Falls prevention programme:** starting February 2024: please book through active@Ageukoxfordshire.org.uk or 01235 849 403.
- **Art & Craft Courses:** Oxford Summer School @ **TOA:** yearly: this year: Monday 5 August to Saturday 10 August with Saturday set aside for one-day classes. See p 7, www.oxfordshireartandcraft.com and instagram [oxford_summer_school](https://www.instagram.com/oxford_summer_school)
- **Art Exhibitions:** **SM&SN:** Regular events showing work of local artists. See: www.littlemorechurch.org/exhibitions. If you are interested in exhibiting your work please contact churchwarden@littlemorechurch.org .
- **Air Cadets:** **ATC:** see www.aircadets.tv/2210. 2210 (Cowley) Sqn parade Mon & Wed from 7.30-9.30pm. Please send enquiries to me, Flt Lt O'Riordan, oc.2210@rafac.mod.gov.uk
- **Allotments:** * Thomson Terrace: to join the allotment waiting list, see our website www.ttacic.org , or email Kathleen O'Donnell Secretary@ttacic.org , or phone Field Secretary Tom Dyra 07867 931 487 *Minchery Farm (see City Council website) *Elder Stubbs (see City Council Website or Restore website) and *Denny Gardens (see www.odfaa.com/members/contact). If you don't mind a journey, there's Redbridge Hollow: www.southwardkenningtonallotments.co.uk : contact emmatinker@hotmail.com or 07769 697 208.
- **Angling Society:** **Extensive local still, & flowing waters:** permits available in all local tackle shops + via our website: www.littlemoreanglingsociety.co.uk . Contact Alan Campbell, 07789 334 710, alancampbell0811@gmail.com . Fixtures p 10.
- **Army Cadets:** **ACF:** If you're 12, in year 8, and are interested in learning news skills, & making news friends, the Army Cadets is for you. We parade on Thursday nights from 7.30 to 9.30pm. See www.armycadets.com/county/oxfordshire-acf/Oxfordshire for more information or contact Colour Serjeant S Turner, Detachment Commander 9882turne@armymail.mod
- **Baby Yoga & Post-natal Yoga:** **VHL:** Thurs 10.30am. Mama Flow Yoga: Sara Barker, Senior Yoga Teacher. For more info & to book see: <https://mamaflow.co.uk> . Concessions are available for low income families.
- **Bingo:** **RBL** on 1st & 3rd Friday, and **VHL** on 2nd & 4th Friday. If there's a 5th Friday, they will decide at the time. For more info contact Katie Tutty 01865 778 869 or littlemorerbl@gmail.com
- **Bowls (Indoor):** **IBC:** Sandy Lane West OX4 6NA: see www.oxbowls.co.uk
- **Childcare: Littlemore Preschool:** **LCC:** open: Mon-Weds 8.45am-2.45pm, Thur & Fri 8.45-11.45am: term-times: for pre-school children from 2-4 yrs. To go on our waiting list please drop by or contact us for an application form. Manager: Hayley Cox: phone 01865 396 449 when we are open, or littlemoreplaygroup@yahoo.co.uk
- **Childcare: Little People Nursery:** **TOA** Northfield Close entrance: 8am to 5.30pm, 48 weeks a year. Manager: Lindsey Hart: 01865 397 972, littlepeeplenursery@peeples.org.uk
- **Childcare: The Old Station Nursery:** Heatley Road, OX4 4GE: **Oxford Science Park:** open all year for children aged 3 months-5 years. Please contact Charlotte Dagg: 01865 777 167 or osp@tosn.co.uk

- **Children's Groups at JHN: term times only.** Stay & Play for 0-5s & parents/carers: Mon & Tues 9-10.15am. Join us for toys, a run around, & fun. No need to have a sibling at the school. For details call Hannah Jamieson on 01865 772 495
- **Children's Groups: Growing Minds** ...see next page
 - **Growing Minds Project:** if you live in Littlemore and have a little one born 2018 onwards, do get in touch to find out more about the Growing Minds project, and about receiving free books. Email families@peeple.org.uk or call Hayley Hayle on 07864 311 964
 - **Growing Minds Stay & Play at SM+SN church:** Thursdays 10-11.30am. For further information, please contact Lucy White: lucy@homestartoxford.org.uk or call 0773 438 9799
 - **Growing Minds Peep group:** at the **Peeples Cabins: TOA** Northfield Close entrance: Tuesdays 9.30-10.30, for all Littlemore parents/carers with babies under 12 months old. For more information call Hayley Hayle on 07864 311 964, hayley.hayle@peeple.org.uk
 - **Growing Minds 1-2s Peep group: VHL:** Tuesdays 1.30-2.30pm: for Littlemore parents/carers & their children. For more information call or text Hayley Hayle on 07864 311964, hayley.hayle@peeple.org.uk
- **Children's Groups: Peep Groups:** Please contact families@peeple.org.uk or phone Lisse Honeyman on 07780 716 098: see www.peeple.org.uk/peep-groups-oxfordshire
- **Singing, stories, & time to talk to practitioners: various locations:** for babies, 1- & 2-yr-olds
- **Growing Minds SEND Peep Group for 0-4s: FSS:** (Rosehill Family Solutions Service, Ashhurst Way, OX4 4UY): 9.30-11am Tuesdays: for Littlemore Families with children with an additional need: no formal diagnoses needed: please book in advance: contact Lisse : as above
- **Children's Groups: Sing & Sign for 0-2 year olds & their parents/carers: VHL:** Mondays 10am, 11.15am and 12.30pm: learn baby signing the fun way in our fun-filled music classes. For more info, and to book contact 07795 005 832 or oxford@singandsign.co.uk . Lead: Emily Percy
- **Children's Groups: Stay & Play:**
 - **Little Chuggers: SHQ:** drop-in indoor & outdoor Stay & Play for children aged 0-4yrs, their parents & carers: find updates on our Facebook page. If you'd like to help: please contact Ruth Lloyd, 07736 831 038, littlechuggers@gmail.com
 - **Stay & Play at the Library** (see Library)
 - **Stay & Play at SM+SN** (see under Growing Minds)
 - **Stay & Play at JHN** (see under Children's Groups at JHN)
- **Churches:** see separate Faith Group listing pp 13 & 14
- **Coffee morning and Sing-along: SM+SN:** Mondays 10am-noon: drop in for coffee, cake, conversation & song: contact: contact Eve McWilliam admin@littlemorechurch.org
- **Coffee morning: SM+SN:** Wednesdays 10am-noon: drop in for coffee, cake, conversation: contact Eve McWilliam admin@littlemorechurch.org or see www.littlemorechurch.org
- **Community Emergency Food Bank: EKH:** Thursday 10 am to 11.30 am. See www.cefoxford.co.uk for details about how to be referred

- **Conservation Work Parties:**
 - **Berks Bucks & Oxford Wildlife Trust. Based in Littlemore:** we have nature reserves which offer days out, and outdoor opportunities to volunteer. Contact: info@bbowt.org.uk or see www.bbowt.org.uk
 - **Oxford Preservation Trust:** Green space volunteering at **Heyford Meadow, Heyford Hill Lane:** 9:30am-12:30pm 3rd Friday every month. All welcome, no experience necessary, instructions & tools are provided. Contact 01865 242 918 or info@oxfordpreservation.org.uk . For more opportunities see www.oxfordpreservation.org.uk
- **Crafting for children + carers: Saturdays: see Library**
- **Dance for Wellbeing: from 23 November at LCC:** Thursdays 12 to 1pm. Provided free by Sport in Mind for everyone 17+ experiencing isolation, loneliness, low mood, or a mental health condition. Fun, casual drop-in Dance session with Nuria Franchy Afonso. This session is for all abilities, just give it a go! See: www.sportinmind.org/oxfordshire
- **Drop-In for people of all ages: RHMC:** Mondays 2-4.30pm Community Drop in: contact Liz Spain, Community Chaplain: rosehillcommunitychaplain@gmail.com or 07754 670 565. One-off Free workshops provided by tutors from Abingdon & Witney College through Age UK Oxfordshire: Mondays 2-4pm at our Community Drop In:
 - 12 February: Yoga - Sitting or Standing
 - 11 March: Drawing & Painting
 Pre booking is not essential, but it would help us to have an idea of numbers. If you would like to come please contact Liz Spain (above)
- **First Aid for Parents & Carers: VHL:** Baby & Child classes to give you the confidence to deal with a medical emergency. Sessions cover CPR, Choking, Bleeding, Burns, Bumps, Breaks, Febrile seizures & Meningitis awareness. Upcoming dates: Thursdays: 22 Feb, 16 May, & 4 July 2024. To book, see: watford.minifirstaid.co.uk . To express interest contact Fran Brooman: fran@minifirstaid.co.uk, or 0796 722 8986.
- **Football Coaching at TOA 3G Dome:** offered by Oxford United in the Community: for girls & boys age 5-11 years: Tuesday evenings: *5-6pm age 5-8 *6-7pm age 9-11: contact Alex Blane at community@oufc.co.uk
- **Gardening Group: VHL:** The Village Hall gardening group meets Thurs 2-4pm, to maintain & improve the grounds of the Village Hall in Railway Lane. All welcome – no experience needed. If you'd like to join please send an advance email to Claire Drinkwater: c.drinkwater760@btinternet.com
- **Gym: TOA:** weekdays 5pm-10pm, weekends 9am-9pm. We have Cardio machines (Treadmills, Cross trainers, rowing machines & bikes) free weights, & assisted weight machines. For more see: <https://toaleisure.schoolbookings.co.uk> . To arrange your £15 monthly membership: either pop in at reception during gym opening hours or contact us on toaleisure@theoxfordacademy.org
- **Halls for Hire:** see separate listing p 12
- **Karate:** Thursdays: at **JHN:** *age 4-6yrs Thursdays 3.30-4pm *age 7-14yrs Thursdays 4-5pm. Chris Wilmott, 07880 636 123 or chriswilmott2000@yahoo.com

- **Kickboxing:** Oxfordshire Freestyle Kickboxing Academy:
LCC: *Tuesdays 6:30-8pm & *Fridays 6:30-8pm: for all ages and abilities. Currently full: contact Mal McKeon: 0771 345 9337 to express interest
- **Knitting Group: SM&SN: all levels, and other crafts welcome:** Tuesdays 11am-1pm. Contact: Eve McWilliam admin@littlemorechurch.org
- **Lacrosse: TOA:** Mondays: *Juniors 6:30-7:30pm *Seniors 7:30-9:00pm. All welcome - no experience needed - trial session free! More info from: Annabel Campbell: OxfordCityLacrosse@hotmail.com. Follow us on Instagram [#OxfordCityLacrosse](#) or FB OXLAX
- **Library: Home Library Service: Home Pick Up & Delivery.** Contact Kevin Salway, 01865 810 259: homelibraryservice@oxfordshire.gov.uk
- **Library: Littlemore Public Library: TOA:** Monday 2-5pm | Tuesday 2-5pm | Thursday 9.30am-5pm | Friday and Saturday 9.30am-12.30pm. Contact Sharon Ingram: 01865 714 309, littlemore.library@oxfordshire.gov.uk
Regular free events at the Library:
 - **Book Group for adults:** monthly: 1st Monday 2pm: read a suggested book and discuss it with the group
 - **Teen Time:** After school Club: Mondays 3.30-4.30: craft and create with friends
 - **Stay & Play for Under 5s & their carers:** Tues 2-4pm & Thurs 10am-12 noon
 - **Councillor Surgery:** 3rd Friday each month 11am-12:30pm. A chance to speak to a local City and Parish councillor (Tiago Corais) about your concerns.
 - **Friendly Friday Social event for adults:** refreshments, games, crafting, chat: weekly: Friday 10.30am-12noon
 - **Saturday Craft: for children & carers:** weekly 9.30-12noon: come and do simple crafts with your children
- **Littlemore Local History Society: LCC:** 3rd Wednesday 7 for 7.30pm. See table right for next meetings. Contact Buffy McClelland, history.littlemore@gmail.com, follow us www.facebook.com/groups or see littlemorelocalhistorysociety.wordpress.com
- **Men's Breakfast: SM+SN:** monthly: 2nd Sat (except August) 9-10am. A space for men to meet, chat and enjoy a full English! Suggested donation £5. Booking required, please email Julian Armitstead: churchwarden@littlemorechurch.org
- **Music: Choirs:** see under Singing
- **Music: Community Orchestra: TOA:** Weds 7-9pm term times. New members always welcome - no auditions, we just play for fun! See www.cowleyorchestra.weebly.com
- **Music: Concerts at SM+SN:** occasional concerts advertised here and on the church noticeboard. To stage a concert contact: Eve McWilliam: admin@littlemorechurch.org
- **Music: Jubilee Brass:** a friendly brass band, all players are welcome. We rehearse Monday/Friday evenings at Grace Church Cowley, OX4 2ES. Please contact Cliff Sadler: jubileebrassoxford@gmail.com for details
- **Music: Jubilate Band: SM+SN:** plays in the monthly Jubilate Church Service for SM+SN church: contact Malcolm Atkins malcolm.atkins1@ntlworld.com or Rev Margreet Armitstead vicar@littlemorechurch.org.

LITTLEMORE ANGLING SOCIETY : FIXTURES*				
	Fixture	Competition	Venue	Draw : Fish
January				
21	S Denny Shield	Winter League/Points	Green Farm Fishery	D 8 : F 10-3
February				
4	Blind Pairs	Prior Cup	Holme Grange	D 8 : F 10-3
25	R C Smith Cup	Winter League/Points	Sandford	D 7.30 : F 9-2
March				
10	Canal Cup	Prior Cup	Oxford Canal (tbc)	D 7.30 : F 9-2
* While flooding persists, please check website.				Alan Campbell

	LITTLEMORE RUGBY FOOTBALL CLUB REMAINING 2023-24 FIXTURES COUNTIES 4 TRIBUTE BERKS BUCKS & OXON NORTH	
	Keep up to date @ fb: Littlemore RFC-Littlemore Rugby Club	
3 February	Grove II	A
17 February	Chinnor IV	H
2 March	Bicester II	A
16 March	Harwell	H
Do come & watch home matches: we're at The Oxford Academy: (Northfield Close Entrance). Our clubhouse has a fully licensed bar with live sports on our big screen. <i>John Perry & David Lammin</i>		

LITTLEMORE LOCAL HISTORY SOCIETY	
January	
17	AGM + A brief history of how we tell the time & date: Julia Brocklesby
February	
21	Goring Priory, a history & comparison with Littlemore: Katie Hambrook
March	
20	James Murray & the creation of the Oxford English Dictionary: Simon Wenham
April	
17	Tom Carter of Marsh Baldon: The invisible collector: Mike Heaney
May	
15	Beer, sausages & marmalade: Food, drink, politics in 19 th C Oxford: Liz Woolley
7 for 7.30pm at the Community Centre: £12 yearly membership, visitors £3 a meeting <i>Bryan & Buffy McClelland, history.littlemore@gmail.com</i>	

SANDFORD-ON-THAMES WOMEN'S INSTITUTE Sandford Village Hall: 7:30pm, second Thursday. You don't need to live here to join us! our year programme is being finalised Contact: me 01865 716 557, jpappslove@hotmail.com , or message fb: Sandford-on-Thames Women's Institute . <i>Jill Love</i>

- **Music: Oxford Village Band: VHL:** Weds 8-9.30pm termly. For over 18s only: Traditional Folk Music in Harmony in the style of English village bands of Thomas Hardy's time. Suitable for most squeeze-box, woodwind, brass, fiddle, viola, cello & double bass players. Contact Dave Townsend: dtmellstock@aol.com or 01865 714 778
- **Music: Piano Lessons, & Music Theory: Littlemore:** tuition for students of any age or stage: Robin Hagues, 01865 770 894, robin@robinhagues.co.uk (enhanced DBS available for inspection)
- **Neighbourhood Watch: reduce and prevent crime in your neighbourhood.** To sign up to an existing group or to start your own see: www.ourwatch.org.uk. If you have questions or need paper registration forms please email Maggie Lewis onw.enquiries@gmail.com
- **Ozone Centre: Grenoble Road OX4 4XP**
 - **City Mazes:** Escape rooms for teens and adults including an upside down escape room. New Room - coming soon! Bunker Blowout - immerse yourself in a World War II bunker themed room. Check Website for availability. 01865 920 900, <https://citymazes.com/location-oxford>
 - **Gravitee Golf: Miniature golf course:** 01865 952 646, www.graviteegolf.com
 - **Hollywood Bowl,** Bowling Alley & entertainment centre: 0844 477 0493 www.hollywoodbowl.co.uk/oxford
 - **Laser Kombat,** Children's Amusement Centre: 01865 788 380 <https://laserkombat.co.uk/oxford>
 - **Partyman World Of Play,** Children's Amusement Centre: with dedicated sessions for those with special educational needs, and with autism (see flier p 14): 01865 788 380 www.partymanworld.co.uk/location/oxford.
 - **Vue Cinema Oxford:** Multiplex cinema with latest films: 0345 308 4620, www.myvue.com/cinema/oxford/whats-on
 - **Various eateries: dine in and take-away:** see www.thekassamstadium.com/the-kassam-leisure-complex
 - **Bray Associates Sunday Boot Fair:** <https://bray-markets.com/bray-markets-kassam-stadium-ox4-4xp-antiques-bric-a-brac-and-boot-fair>
- **Pilates: Littlemore & Iffley:** physiotherapy-led classes & individual sessions. Three class formats now offered: face to face, live online via Zoom & a pre-recorded class (available for repeat use). For more info see: www.clevermovement.co.uk. Contact Jane Callaway: janecallawaypilates@hotmail.co.uk
- **Pop-Up Pilates (Physiotherapist-led) at VHL: Weds at *5.30pm & at *6.30pm:** Online sessions also available: contact Lauren McLeod 07731 321 991, info@pop-up-pilates.com or see www.pop-up-pilates.com
- **Pregnancy Yoga: VHL:** Mondays at 7.30pm. Mama Flow Yoga: Sara Barker, Senior Yoga Teacher. For more info & to book see: <https://mamaflow.co.uk>. Concessions are available for low income families.
- **Reading Group for adults: see Library**
- **Restore Shop & Café** at Littlemore Hospital: Coffee and snacks TTO. For updates see: facebook.com/oxrestore or twitter.com/oxrestore. Contact: Amy McCauley 01865 902 098, or littlemorecoverygroup@restore.org.uk. cont...

To volunteer there, see www.restore.org.uk/restore/volunteer and/or email volunteer@restore.org.uk

- **Rhythmic Gymnastics Club:** for girls from the age of 4 years: **TOA:** *Tuesdays 5-6pm, 6-7pm | Fridays 5-6pm, 6-7pm | Saturday 9-10am, 10-11am: contact Zuzana Gergelova info@oxfordgymnastics.co.uk, www.oxfordgymnastics.co.uk
- **Royal British Legion Club: RBL:** see Bingo, and Halls for Hire Listings: contact Katie Tutty 01865 778 869 or littlemoretbl@gmail.com
- **Rugby Training (Littlemore Rugby Club Senior): TOA:** **Northfield Close entrance: OX4 4NH:** Tuesdays & Thursdays 7-8pm (Thurs only, 7-9pm Oct-March). Info updated daily @ fb: [RFC-Littlemore Rugby Club](https://www.facebook.com/RFC-Littlemore-Rugby-Club), contact David Lammin: 07341 841 821, info@littlemorerfc.org. Find fixtures on p 10.
- **Rugby Training Littlemore Rugby Club Mini & Junior: 5-12 yrs,** all abilities welcome): **TOA: Northfield Close entrance: OX4 4NH:** training Sundays at 10am. Please contact John Perry 07766 954 922 or minis@littlemorerfc.org for more information
- **School Uniform Swap Shop: TOA:** Term time: Mondays after school. To donate a preloved uniform please bring it to Reception in a labelled bag. To sponsor a new one, contact Rev'd Kay Blackwell kay.blackwell@theoxfordacademy.org
- **Scriptural Reasoning Group: SM&SN:** monthly, Mondays 7-8pm: for dates see: www.littlemorechurch.org/scriptural-reasoning.html. Meet people of other faiths and explore scriptures together. If you'd like to come please email oxford@dialoguesociety.org
- **Singing: St Andrew's Church Choir: SAC:** We're always happy to accept new members. Choir Practice is 7.30pm Wednesday evening. There's no need to be a regular church goer: contact Christian Bradley cwwbradley@gmail.com
- **Singing: Sing & Sign: VHL:** see under Children's Groups
- **Social Groups: see:** Afternoon tea at VHL, Coffee morning +sing-along, Coffee Morning, Women's Institute, the Library listings, Drop-In, and Knitting Group
- **Women's Institute: SVH:** meets at 7.30pm on 2nd Thursday in each month usually in Sandford Village Hall. Contact: Jill Love 01865 716 557, jpappslove@hotmail.com or Carole Tasker caroletasker27@gmail.com or 01865 748 300 / 07876 701 151, or message our Fb page Sandford-on-Thames Women's Institute.
- **Woodturners Club: at VHL:** Club nights are second Thursday each month except December (club AGM): 7pm start. Newcomers are very welcome, no matter what level of experience: entry is free for your first 2 sessions. Contact owc_secretary@yahoo.com for more information or see www.oxonwoodturners.com
- **Yoga:** see Baby Yoga, and Pregnancy Yoga above.
- **Young people:** Education, Employment and Training support plus Activities & Info, visit: www.oxme.info
- **Youth Groups: continues on next page**
 - **Air Cadets, and Army Cadets: see under 'A' above**
 - **Beavers (age 6-8): Cubs (age 8-10½) and Scouts (age 10½-14):** see their individual websites for details

- **Brownies (1st Littlemore, for girls 7-10 yrs):** **VHL:** term times: fortnightly on Fridays: contact leader Wendy Lumley, brownieslittlemorewendy@gmail.com
- **Explorers (age 14-18):** **SHQ:** Fridays, 7-8.30pm: see: www.oxfordspires.org.uk . Just turn up, or contact group leader Shane Clark shane@teemclark.org.uk or Camille Kalaja camille.scout.kalaja@gmail.com
- **Youth Ambition:** Manager: Leonard Sackley. Contact 01865 335 884 YouthAmbition@oxford.gov.uk .
- **Littlemore Youth Club:** **LCC:** Thursdays 4-6pm: term-times: free: open to young people aged 11-19. Come chill, have fun and enjoy activities, trips, games, cooking, gaming, arts & craft, music and more!
- Local young people are welcome to attend **other nearby Youth Clubs and Sports sessions** listed on the Youth Ambition webpage, Instagram and Facebook
- **Zumba: TOA:** Mondays 7-8pm. Instructor since 2011, my classes are high energy, good fun and burn over 500 calories! All ages (14+) and abilities welcome. Pre-booking required via: www.zumba-steffi.co.uk or email me steffihalldance@gmail.com
- **Zumba: LCC:** *Mondays 6:30-7:30 pm Zumba & Toning (with weights) and Thursdays 6:30pm-7:30 pm Zumba. Suitable for all fitness levels. No need to book: £6 per class (concession if attending multi classes in month). Contact: Pat Meade 07957 491 868 or patsimeade63@gmail.com

LITTLEMORE HALLS FOR HIRE

- **The Newman Meeting Place:** various flexible spaces including a kitchen able to cater for 100: suitable for meetings, conferences, exhibitions, groups, concerts etc: at St Mary & St Nicholas Church, Sandford Road, near OX4 4PB. See www.littlemorechurch.org/venue-hire.html. Contact Julian Armitstead: churchwarden@littlemorechurch.org
- **The Oxford Academy:** Beecroft Theatre, Bistro Hall, Events Rooms, Sports Hall, 3G Full size floodlit pitch, 3G Dome, Astro turf pitches, Grass pitches, Dance Studio, Fitness Suite, Drama studio and Classrooms: at TOA, Sandy Lane West, Littlemore, OX4 6JZ. See: <https://toaleisure.schoolbookings.co.uk> Contact TOA Leisure: 01865 783 238 or toaleisure@theoxfordacademy.org
- **The Royal British Legion Littlemore:** Functions rooms, Games room with snooker tables, darts boards and Bar: at Lakefield Road, Littlemore, OX4 4LZ. Contact Katie Tutty 01865 778 869 or littlemorerbl@gmail.com
- **The Village Hall, Littlemore:** Hall with wifi, kitchen, stage & garden: at Railway Lane, Littlemore, OX4 4PY. Available to hire for organised classes, meetings, worship, & family gatherings. See: www.littlemorevillagehall.org. Contact: littlemorevillagehall@gmail.com

COMMUNITY GROUPS open to residents to join

- **Community Gardening Group:** not yet established but if you'd be interested in hearing more, or if you have ideas on what a group might do to help the area, please email Sandy Douglas cllr@douglas@oxford.gov.uk
- **Littlemore Community Association:** runs the Community Centre. Membership of the Association is open to Littlemore residents. Its Trustees include Cllr Dorian Hancock: dorianhancock@littlemoreparishcouncil.gov.uk
- **A Littlemore Community:** a group of residents with an interest in planning. They are currently working with the Parish Council on the Neighbourhood Plan: contact: Tony Eade: tony@edperspectives.org.uk
- **Littlemore Parish Council:** there are now no vacancies for Parish Councillors, but residents are welcome to join LPC Working Groups. Find all contact details on p 16.
- **Littlemore Park Parents Steering Group:** working to improve facilities at the Littlemore Recreation Ground on Oxford Road. Contact: Ruth Corrigan OxfordRoadParkPSG@gmail.com
- **Littlemore Partners:** a Network of representatives from various local organisations, supported by interested members of the community. Its aim is to improve communication between residents and service providers, and campaign for improved services. Chair: Katie Scream, JHN Academy. If you would like to know more, contact: finance@jhnacademy.co.uk
The Health & Wellbeing sub group. If you are interested in joining please contact the Chair: Rev Margreet Armitstead: vicar@littlemorechurch.org
- **Littlemore Residents Association:** a new group advertised on local social media and through leaflet drops. They aim to enable residents to voice concerns, and do their best to ensure that Littlemore is not forgotten in the various funding rounds. Chair: Lorraine Whipp. If you'd like to know more contact littlemorerres@yahoo.com
- **The Trustees of the Village Hall:** run the Village Hall which provides buildings, facilities and open space for Littlemore residents to use. They welcome new help: their Chair is Claire Drinkwater: c.drinkwater760@btinternet.com

LITTLEMORE TRADES & BUSINESSES

- **Explore Learning Oxford:** Maths & English tuition for 4-14 year olds: upstairs at Sainsbury's. Contact: Paul Drake & Kate George, 01865 595 509. See: explorellearning.co.uk/oxford
- **ProPest Oxford LTD Pest Control.** We deal with Wasps, Moles, Rats, Mice, Cockroaches, Fleas & all Stored Product Insects. Licensed, insured, experienced & accredited by NPTA. Call Pete White 01865 579 366
- **Key Valentin: Reiki Healing Practitioner / Master.** *1:1 in person or online Energy Healing - Helping you to feel calmer and more connected to yourself. For more information, booking or consultation please contact me on 07851396622.
- **Westlake Heating & Plumbing:** Mike Westlake, telephone 07588 865 868. Gas Safe Registration No: 597859.

All listings are free. To add anything please contact the editor: editor@littlemoreparishcouncil.gov.uk

NEIGHBOURING NEWSLETTERS

- **Blackbird Leys:** Sign up for the Community Group Newsletter at www.facebook.com/groups/656236718050193
- **Rose Hill:** find the latest Newsletter at: rosehillnewsonline.com/editions or follow their Facebook page: www.facebook.com/RoseHillNews. To get in touch, email Aimee Winkfield at aimee-rosehillnews@hotmail.com
- **Sandford on Thames:** find The Sandford Link at <https://sandford-on-thames-pc.gov.uk/the-sandford-link/>

FAITH GROUPS

- **Blessed Dominic Barberi Roman Catholic Church**, Cowley Road, OX4 4JX. See: www.bldominicbarberioxford.org.uk
- **Coptic Orthodox Church:** at St Mary & St Nicholas Church: meets on the first Saturday of each month for the holy liturgy, followed by breakfast. Everyone is welcome
- **God and People Centre (GAPC):** meets at the Community Centre, Giles Road, OX4 4PL every Sunday 11am-1pm. Refreshments are served after the service. Everyone is welcome. For Bible Study, Prayer, & Fellowship: contact Mrs Stone: Jstone@cogop.org.uk
- **Littlemore Baptist Church:** Edith Kempson House, Chapel Lane, Littlemore, OX4 4QB: www.littlemorebaptist.org.uk
- **Maranatha Christian Church:** meet at the Community Centre, Giles Road, OX4 4PL. Please use the web to find more detail
- **New Life Church:** Sunday services in Nepali, at **VHL:** see: www.nccuk.org/site/church/new-life-church
- **Rose Hill Methodist Church:** Rose Hill, OX4 4HS. Website <http://rosehillmethodists.org.uk>. Sunday worship is at 10.30am. Community Drop in for people of all ages: Mondays 2-4.30pm (see Drop in in What's On p 9)
- **Church of England Benefice of Littlemore & Sandford on Thames:** Priest in Charge: Rev Margreet Armitstead vicar@littlemorechurch.org
The benefice comprises:
 - ❖ **St Mary and St Nicholas C of E Church**, Sandford Road, near OX4 4PB: website: www.littlemorechurch.org
Vicar: Rev Margreet Armitstead vicar@littlemorechurch.org
General enquiries: admin@littlemorechurch.org
 - ❖ **St Andrew's Church** Church Road, Sandford on Thames, OX4 4XZ : website: sandfordchurch.org.uk
Vicar: Rev John Findon 01865 434 256 or Rev Bob Morgan 01865 74884

SEASONAL EVENTS AT ST MARY & ST NICHOLAS CHURCH

- **Shrove Tuesday Pancake Party:** Tues 13 Feb, 3.30-4.30pm. Join us after school for crafts & pancakes!
- **Ash Wednesday Service:** Weds 14 Feb, 7pm
- **Palm Sunday Service:** Sun 24 Mar, 10.30am: meet at the village green to process through Littlemore, and on to church for the Eucharist service.
- **Maundy Thursday:** Thurs 28 Mar, 7.30pm in the church: a simple Passover meal followed by a service and vigil.
- **Good Friday Service:** Fri 29 Mar, 2pm: a Reflective service to remember Jesus' death on the cross.
- **Easter Sunday Service:** Sun 31 Mar, 10am: Celebrating Jesus' resurrection.
- **Easter Egg Hunt:** Sun 31 Mar, 3pm: Easter crafts in church and an egg hunt

REGULAR EVENTS AT ST MARY & ST NICHOLAS CHURCH see next page

Saturday 3rd February
2.30-4.30pm



all are welcome to
tea, coffee, & conversation,
delicious home-made cake...
a card stall with a Valentine theme...
and an opportunity to meet
some of your Parish Councillors

organised by Littlemore Village Hall Committee
to join, or to help, please contact
c.drinkwater760@btinternet.com

Saturday 2nd March
2.30-4.30pm



all are welcome to
tea, cake, conversation
it's also an opportunity to stock up on
hand-made chocolate Easter eggs,
& to meet some of your parish councillors

organised by Littlemore Village Hall Committee
to join, or to help, please contact
c.drinkwater760@btinternet.com

8 'TIL LATE SAT MARCH 16

LITTLEMORE ROYAL BRITISH LEGION

TICKETS £10 From the Club - Katie 01865 778869 or Contact Lorraine 07879053246

TICKETS ARE ONLY AVAILABLE FROM THE CLUB, LORRAINE & KATIE

REGULAR EVENTS AT ST MARY & ST NICHOLAS CHURCH

❖ THE WEEK at the Church

Sundays

- Eucharist Service at 10am in church or Zoom (Meeting ID: 853 9014 0153, Passcode: Eucharist)

Mondays:

- Coffee & Singalong: 10am-12noon
- Scripture Reasoning: 7-8pm monthly: meet people of other faiths & explore scriptures together. To come please email oxford@dialoguesociety.org

Tuesdays

- Silent Prayer in the church at 8am
- Morning Prayer at 8.30am
- Knitting Group (other crafts welcome!) 11-1pm
- Book Discussion Group: starting 30th Jan (for 6 weeks), 7.30-8.45pm. Reading *Falling Upward: A Spirituality for the Two Halves of Life* by Richard Rohr. If you'd like to join email vicar@littlemorechurch.org

Wednesdays

- Church coffee morning for all, 10am-12noon

Thursdays

- Morning Prayer in the church at 8.30am
- Growing Minds stay & play group, 10-11.30am for Littlemore residents & their pre-school children. With a pre-school clothing swap. Food parcels are available.
- Rose Hill & Donnington Advice Centre Sessions: fortnightly from 10-11am: drop in or pre-book: for dates or to pre-book call 01865 438 634
- Littlemore Friendship Group, 2nd Thursday each month at 10am in church.

Saturdays

- Men's Breakfast 9-10am: 2nd Saturday each month: a full English Breakfast & time to talk. Suggested donation is only £5: if you'd like to come please contact Julian Armitstead churchwarden@littlemorechurch.org

❖ ARTS EVENTS: see: www.littlemorechurch.org/the-arts

- **Concerts:** see our noticeboard and our website. If you wish to hold a concert in our church please contact vicar@littlemorechurch.org
- **Exhibitions:** We regularly hold exhibitions of local artists' work. If you would like to exhibit your work please contact churchwarden@littlemorechurch.org
- **Harvest of Talents:** a yearly event: dates for 2024: 21 Sept -19 October
- **Jubilate Band:** this informal group plays in the monthly Jubilate Church Service: to join, contact Malcolm Atkins malcolm.atkins1@ntlworld.com or Rev Margreet Armitstead vicar@littlemorechurch.org

❖ BAPTISMS, WEDDINGS & FUNERALS: Please contact Rev Margreet Armitstead vicar@littlemorechurch.org or phone 01865 748 003

Would you like to
**SUPPORT OUR
COMMUNITY**
this winter?



logo by kreativkolors at Freepik

Please contact the groups below to learn more about how they provide support for local families, and to offer your financial help.

 **Rose Hill & Donnington
Advice Centre**

01865 438634
www.rhdadvice.org

 **Food Bank at Edith Kempson
House, Chapel Lane, Littlemore**

info@cefoxford.co.uk
07876 128435
www.cefoxford.co.uk

 **Stay & Play at Littlemore Church
Thursdays 10-11.30am**

Lucy@homestartoxford.org.uk
07734 389799
www.homestartoxford.org.uk

 **Supporting pre-school
families**

Lucy@homestartoxford.org.uk
01865 649003
www.homestartoxford.org.uk

 **Autism friendly
SEN SESSIONS**

Partyman World of Play are proud to offer COMPLIMENTARY morning and evening sessions dedicated to children and young adults with special needs, exclusively for their use.

MORNING SESSIONS	EVENING SESSIONS*
9AM TIL 10AM	6PM TIL 8PM
Sunday 28th January	Thursday 4th January
Sunday 25th February	Thursday 1st February
Sunday 24th March	Thursday 7th March
Sunday 28th April	Thursday 4th April (4pm-6pm)
Sunday 26th May	Thursday 2nd May
Sunday 30th June	Thursday 6th June
Sunday 28th July	Thursday 4th July
Sunday 25th August	Thursday 1st August (4pm-6pm)
Sunday 29th September	Thursday 5th September
Sunday 27th October	Thursday 3rd October
Sunday 24th November	Thursday 7th November
Sunday 22nd December (Xmas Themed)	Thursday 5th December

*Please note that during term-times our venues are open to the public until 6:30pm. Please be mindful of this overlap when attending our SEN sessions.

Working in Partnership with Partyman's Magic Makers charity partymanmagicmakers.org.uk

Sing and Sign
helping babies communicate before speech

**What is your baby
trying to tell you?**

Learn baby signing with us!

- ✓ Award-winning courses designed with speech and language therapists
- ✓ Learn a skill together
- ✓ Make new friends

Scan to join us in Littlemore on Mondays!

oxford@singandsign.co.uk



OTHER USEFUL CONTACT INFORMATION

ROSE HILL ADVICE CENTRE

We serve Rose Hill, Donnington & Littlemore, and offer free advice in confidence to all local residents looking for help sorting out benefits, debt, and housing issues. Should the need arise, we will represent you in Courts of Law (for debt, rent arrears, eviction or mortgage repossession).

Find us: in the Rose Hill Community Centre, Carole's Way, off Ashhurst Way, Rose Hill, OX4 4HF

and at St Mary & St Nicholas Church every other Thursday morning (see Advice on p 8 in What's On)

Contact us:

online at rhdadvice.org

email: admin@rhdadvice.org

freephone 0800 170 0156 or 01865 438 634

Monday to Thursday from 9.30am to 4.00pm.

Sarah Meziu, Manager



GENERAL PRACTICES

There are no Primary Medical or Dental services in Littlemore: the following GP surgeries cover Littlemore area:



Donnington Medical Partnership: 01865 771 313

1 Henley Ave, OX4 4DH

Cowley Road Medical Practice: 01865 791 850

Manzil Way, Cowley, OX4 1XD

Hollow Way Medical Centre: 01865 777 495

18 Ivy Close, Cowley, OX4 2NB

The Leys Health Centre: 01865 778 244

Dunnock Way, OX4 7EX

St Bartholomew's Medical Centre: 01865 242 334

Manzil Way, Cowley Rd, Cowley, OX4 1XB

Temple Cowley Health Centre: 01865 777 024

Temple Rd, Cowley, OX4 2HL

LOCAL PHARMACIES

Rose Hill: **The Leys Pharmacy:** 6a Courtland Rd, OX4 4HZ: 01865 777836: (offers emergency contraception)

Cowley Centre: **Superdrug Pharmacy:** Templars Square, OX4 3UZ: 01865 779 299

Late Night: **Boots:** Oxford Retail Park, OX4 6XJ: 01865 717699: open 'til midnight M-F, and 'til 10pm Saturday: (offers emergency contraception)

LITTLEMORE SCHOOLS

Emmanuel Christian School: www.ecschool.co.uk, email: admin@ecschool.org.uk

John Henry Newman Academy: www.jhnacademy.co.uk

Mabel Prichard Secondary School: www.mabelprichard.org

The Oxford Academy: www.theoxfordacademy.org.uk

St John Fisher Catholic Primary School:

www.st-john-fisher.oxon.sch.uk

OUR LOCAL MP: Anneliese Dodds

• Address: Unit A Bishops Mews, Transport Way, OX4 6HD or House of Commons, London, SW1A 0AA.

• Email: anneliese.dodds.casework@parliament.uk

• Telephone: 01865 595 790 (9am to 5pm Monday, Tuesday, Thursday & Friday).



NEIGHBOURHOOD POLICE

www.thamesvalleyalert.co.uk

Rose Hill Community Centre, Carole's Way, OX4 4HF

Contact the team:

- Ring 101 for non emergency calls, or 999 for emergencies
- email RosehillTeam@thamesvalley.police.uk

Follow us on:

- Twitter – [TVP Oxford](#) or Facebook – [Thames Valley Police](#)



COMMUNITY WATCH

- **To report needles, sharps, offensive graffiti**, or graffiti on public buildings, council properties and in parks, cemeteries and bus shelters: report online at https://www.oxford.gov.uk/info/20095/do_it_online or telephone Oxford Direct Services on 01856 249 811 (they'll give advice about graffiti on private property, too).
- **To report Dog Fouling, Noise, Fly Tipping etc:** contact the Community Response Team, Oxford City Council: email saferoxford@oxford.gov.uk, or phone 01865 252 969. Or: Dog fouling and Fly tipping : <https://www.fixmystreet.com> Noise: www.oxford.gov.uk/info/20058/noise_pollution/145/report_a_noise_problem (there's no out of hours service now).
- **To report a lost, or a stray dog:** contact the Dog Warden service at the City Council: 01865 249 811 or ecitizen.oxford.gov.uk/citizenportal/form.aspx?form=Report_Stray_Dog.
- **To report Anti-Social Behaviour**, contact the police on 101 (999 if it's an emergency) or the Anti-Social Behaviour Investigation Team, Ox City Council: saferoxford@oxford.gov.uk or telephone 01865 252 969.
- **To report Illegal parking** email parking@oxfordshire.gov.uk, or go to <https://service.oxfordshire.gov.uk/reportparkedvehicle>. If a road or pavement is obstructed, call the police on 101.
- **If you don't know who to call** to report things that need fixing, cleaning or clearing, like potholes, noisy manhole covers, or out of phase street lights, go to FixMyStreet: www.fixmystreet.com
- **Neighbourhood Watch Groups:** To join your local NW group, or form a new one, see www.ourwatch.org.uk.



NEIGHBOURHOOD WATCH IN LITTLEMORE

If you want to reduce & prevent crime in your neighbourhood, join Neighbourhood Watch (NW).

You can sign up as a member on <http://www.ourwatch.org.uk>.

No scheme for your road? You can start a scheme, join a different scheme or join as an individual. Scheme Coordinators are needed: they share & receive information and become the approved contact with our partners in the neighbourhood policing team.

Does your existing group need to be approved? Since 2018 all NW schemes have to be approved & associated to use the name Neighbourhood Watch. It is easy to have a scheme approved, to continue running in the same way, or to start a new one.

If you have questions, please email me, at onw.enquiries@gmail.com.

Maggie Lewis

LITTLEMORE PARISH COUNCIL

2023-4 Council Chair: Cllr Maggie Willis Vice Chair: Cllr Dorian Hancock

MEMBERS and their preferred contact details

Cllr Susie Aldridge: susie.aldridge@littlemoreparishcouncil.gov.uk
 Cllr Alison Cadle: alison.cadle@littlemoreparishcouncil.gov.uk
 Cllr Tiago Corais: cllrtcorais@oxford.gov.uk
 Cllr Lynne Davies: lynne.davies@littlemoreparishcouncil.gov.uk
 Cllr Michael Evans: michael.evans@littlemoreparishcouncil.gov.uk
 Cllr Peter George: peter.george@littlemoreparishcouncil.gov.uk
 Cllr Dorian Hancock: dorian.hancock@littlemoreparishcouncil.gov.uk
 Cllr Sadiea Mustafa-Awan: s.m.awan@littlemoreparishcouncil.gov.uk

Cllr Erdem Pulcu: erdem.pulcu@littlemoreparishcouncil.gov.uk
 Cllr Janice Pullen: jan.pullen@littlemoreparishcouncil.gov.uk
 Cllr Anna Railton: anna.railton@littlemoreparishcouncil.gov.uk
 Cllr Gabriele Santi: gabriele.santi@littlemoreparishcouncil.gov.uk
 Cllr Chris Smowton: chris.smowton@littlemoreparishcouncil.gov.uk
 Cllr Anne Stares: anne.stares@littlemoreparishcouncil.gov.uk
 Cllr Sue Stewart: sue.stewart@littlemoreparishcouncil.gov.uk
 Cllr Maggie Willis: maggie.willis@littlemoreparishcouncil.gov.uk

*There are 16 seats: the seats are distributed: Littlemore ward (13 seats), Bodley Road ward (2 seats), Sandy Lane West ward (1 seat).
 Cllrs Cadle a& Santi represent Bodley ward Cllr Evans represents Sandy Lane West ward All others represent Littlemore ward*

CONTACT DETAILS FOR FULL COUNCIL

Clerk: Morgan James: clerk@littlemoreparishcouncil.gov.uk Telephone: 07377 682 216.

Write to the whole Parish Council via the Clerk: 25 Lambert Walk, Thame, Oxon, OX9 3DT.

COMMITTEES

Finance & General Purposes Committee

Chair: Dorian Hancock

Members

Susie Aldridge (G)
 Peter George
 Sadiea Mustafa-Awan (G)
 Maggie Willis (G)

G = Grants Subcommittee

Personnel Committee

Chair: Maggie Willis

Members

Susie Aldridge
 Alison Cadle
 Lynne Davies
 Dorian Hancock

Planning Committee

Chair: Sue Stewart

Members

Lynne Davies
 Jan Pullen
 Chris Smowton
 Maggie Willis

WORKING GROUPS

Membership of all working groups is open to the public; please contact the working group chair to express your interest.

KEY: (L) = Lead (P) = public member, who is not a parish councillor.

C'munity Engagement, Climate & Biodiversity

Tiago Corais
 Judith Godslan (P)
 Jan Pullen (L)
 Anna Railton
 Gabriele Santi
 Sue Stewart
 Chris Smowton
 Maggie Willis

Estates & Maintenance

Susie Aldridge
 Alison Cadle
 Lynne Davies
 Sadiea Mustafa-Awan
 Anne Stares
 Maggie Willis (L)

IT

Alison Cadle
 Peter George (L)
 Anna Railton
 Chris Smowton

Neighbourhood Plan

Lynne Davies
 Laura Davis (P)
 Tony Eade (L) (P)
 Frank Gargent (P)
 Peter George
 Ruth McNamara (P)
 Jan Pullen
 Anna Railton
 Chris Smowton
 Maggie Willis

Transport & Connectivity

Tiago Corais
 Lynne Davies
 Michael Evans
 Sadiea Mustafa-Awan (L)
 Erdem Pulcu
 Anne Stares

Policies

Alison Cadle (L)
 Dorian Hancock
 Chris Smowton
 Maggie Willis

OTHER PROJECT GROUPS

Herschel Crescent Recreation Field Development Project: Jan Pullen, Sue Stewart, Maggie Willis

Parks Improvement Working Group: Jan Pullen, Ruth Corrigan (P), Maggie Willis, SORCHA LANHAM (P)

Emergency Plan: Alison Cadle, Lynne Davies, Anne Stares

Iffley Charities Representatives: Susie Aldridge, Dorian Hancock

Littlemore Community Association Representatives: Michael Evans, Dorian Hancock, Sadiea Mustafa-Awan.

Littlemore Partners & Communities Meeting Representatives: Jan Pullen, Anne Stares.

FULL COUNCIL MEETINGS

Full Council Meetings are held at Littlemore Village Hall, Railway Lane, OX4 4PY,
 from 7-9pm on the 2nd Tuesday each month except August.

Members of the public are welcome to attend. For news about the meetings, and for minutes of meetings,
 please check the Parish Council website: www.littlemoreparishcouncil.gov.uk.



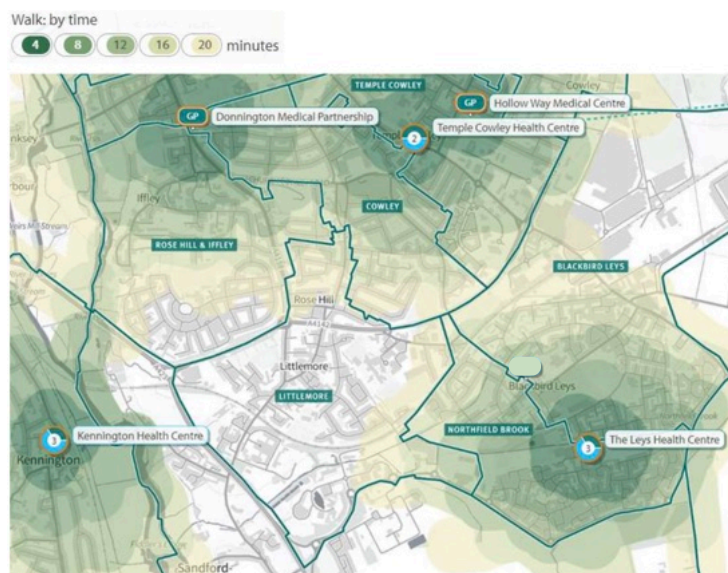
LITTLEMORE COMMUNITY INSIGHT PROFILE

Oxford City Council and Oxfordshire County Council (Public Health) have been working on a project to find out more about health and wellbeing in the county. One of the areas of focus was Littlemore. Last year they engaged Community First Oxfordshire (CFO) to speak to residents of Littlemore and seek their opinions in interviews, online and through surveys. See **LITTLEMORE LOCAL** Issue 452.

They send a big *thank you* to all the Littlemore residents, groups, and organisations who participated. Their contributions have led to the development of a Community Insight profile. You can find it and the associated reports on the Oxfordshire Insights website under Community Insight Profiles: <https://insight.oxfordshire.gov.uk/cms/community-insight-profiles>.

The outcome reports highlight some of the strengths of the area, and describe some of the issues that those surveyed felt challenge the health and wellbeing of Littlemore residents. The distance from a General Practice, illustrated in the map below is an example.

Map from the Community Insight Profile illustrating walking distance from a GP in Littlemore, compared with neighbouring areas



There are 2 lots of funding available for local organisations to make improvements:

- £25,000 Community Insight profile grant funding (provided by Oxfordshire County Council)
- £100,000 Well Together Programme funding (provided by the NHS Integrated Care Board). You can find out more about the Well Together programme by visiting <https://ocva.org.uk/well-together-programme/>.

Local organisations will be invited to bid for small pots of funding for activities covering the priorities outlined in the community insight profile, and for activities aimed at reducing health inequalities in the area.

Details of how to bid for funding will be circulated on various channels shortly.

Meanwhile interested residents are invited to be a part of a panel that will help to decide the allocation of funding. There are 4 broad categories, and some of the suggestions within each category are listed in the next column.

Categories, and suggested improvements

1) Public Realm and Services

- Primary and secondary healthcare provision: discussions to explore improvements to local services.
- Local environment/streetscape improvement discussion
- Anti-social Behaviour initiatives
- A campaign to improve local infrastructure
- Public transport improvement discussions

2) Community cohesion and integration

- Develop a strategy for community-wide communication
- Develop a programme of whole-community events
- Develop a Youth Council
- Extend community development worker support
- A Warm Spaces publicity campaign

3) Community action: innovation and resilience

- Improve joint-working and networking
- Explore innovation in community building usage and/or development of a community hub
- Explore funding avenues for community innovation
- Launch a drive for Littlemore Volunteers

4) Community action: meeting locally- identified needs

- Additional support for young people
- Community-based mental health initiatives
- Develop new or extend existing community activities/sessions
- Develop community-based Life Skills sessions
- Develop new or extend existing environment-based community activities, sessions, and innovations
- Support group for parents of children with Special Educational Needs and groups for children/ young people
- Develop a community transport scheme/Good Neighbours Scheme to facilitate better access to community activity
- Explore ways in which the generations might mix more

If you would like to be involved in the panel or would like further information please contact

- ☒ Alexa Bailey, Littlemore Community Health Development Officer at abailey@oxford.gov.uk
- ☒ or the Well Together Team at welltogether@ocva.org.uk.

VOLUNTEERS ARE NEEDED AT THE VILLAGE HALL!

The current management team is very small: if we are to keep this important facility running, we need more people to get involved. There are various ways you might help:

- ☒ Occasionally, with Saturday teas or other special events.
- ☒ Regularly, with gardening or housekeeping
- ☒ By offering a special skill – eg as Treasurer or Website manager
- ☒ By joining our management committee.

If you would like to know more, please contact me:

c.drinkwater760@btinternet.com.

Claire Drinkwater

PARISH COUNCIL TREE PLANTING INITIATIVE

Over this winter we had hoped to plant 14 new trees in Addison Drive, Orchard Way, Priory Road, Giles Road, Vicarage Close, Lakefield Road, Long Lane, and Herschel Crescent, but administrative delays mean that some of this planting will probably be delayed until Autumn, as it is now rather late in the planting season.

Meanwhile, if you have suggestions for sites for new/ replacement street trees, please email Anna Railton: anna.railton@littlemoreparishcouncil.gov.uk.

The copy deadline for the April / May edition is 6pm on Thursday 14 March. The e-version will be published on 18 March.

To receive **LITTLEMORE LOCAL** by email, or to submit copy, please contact editor@littlemoreparishcouncil.gov.uk.